



HANDBUCH GEO-ENSO

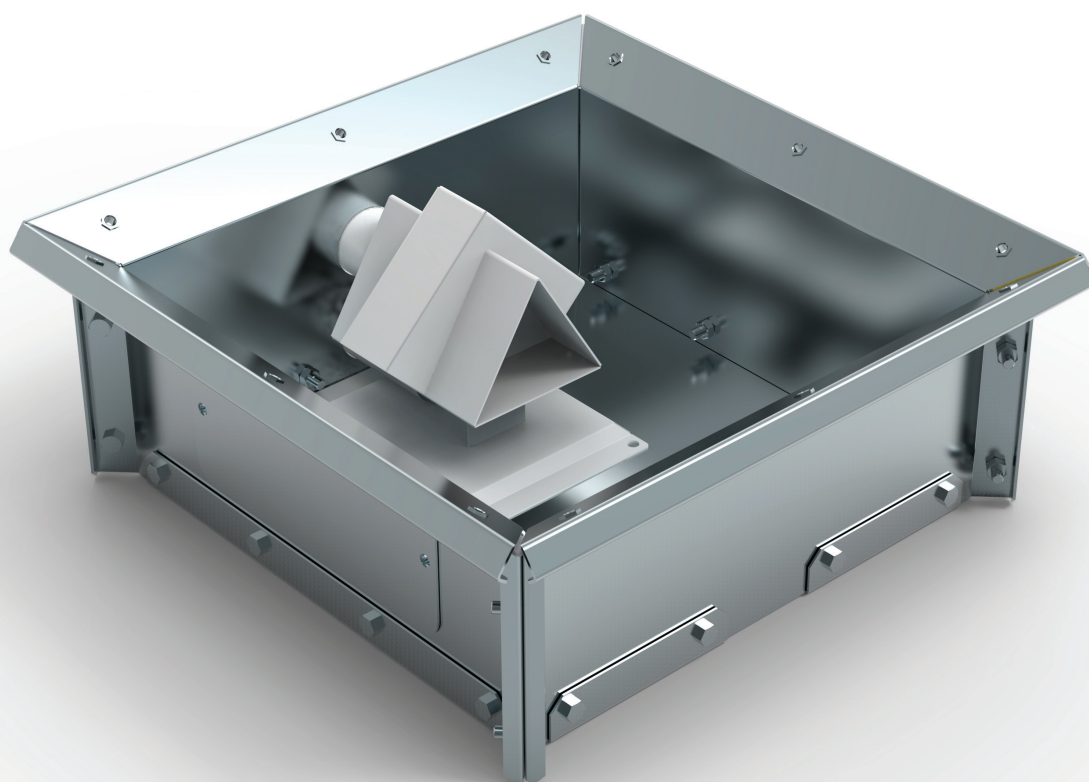
DE - Handbuch

EN - Manual

FR - Manuel

IT - Manuale

ES - Manual





DE: LIEFERUMFANG

EN: SCOPE OF DELIVERY

FR: VOLUME DE LIVRAISON

IT: CONTENUTO DELLA CONSEGNA

ES: VOLUMEN DE ENTREGA

Symbol	Art.Nr.	Stk./pcs.
	(A) 2-100.99.205	2
	(B) 2-100.99.231	1
	(C) 2-100.99.211	1
	(D) 2-100.99.202	1
	(E) 2-100.99.212	1
	(F) M8x20	26
	(G) M8	24
	(H) M6x20 4-900.10.134	2
	(I) M6	2
	(J) 1-100.15.660	1
	(K) 1-100.15.619	4

DE: LIEFERUMFANG (DN45)

EN: SCOPE OF DELIVERY (DN45)

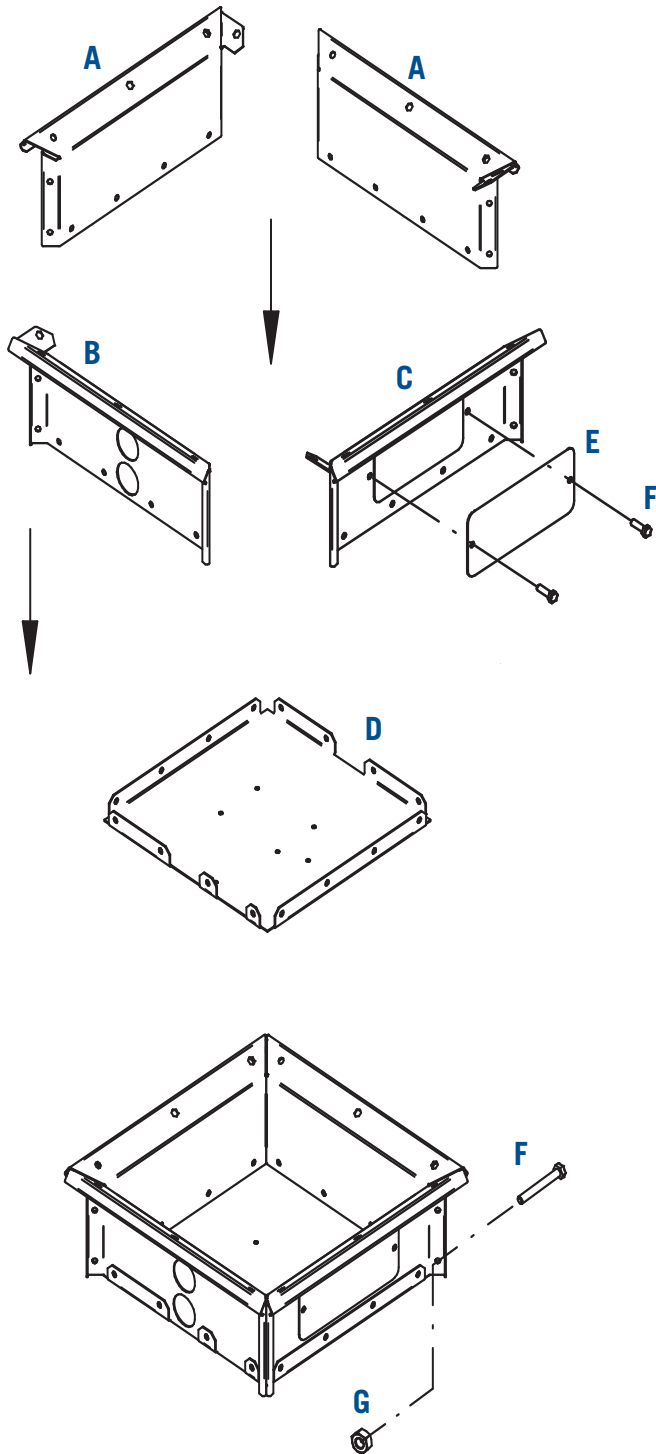
FR: VOLUME DE LIVRAISON (DN45)

IT: CONTENUTO DELLA CONSEGNA (DN45)

ES: VOLUMEN DE ENTREGA (DN45)

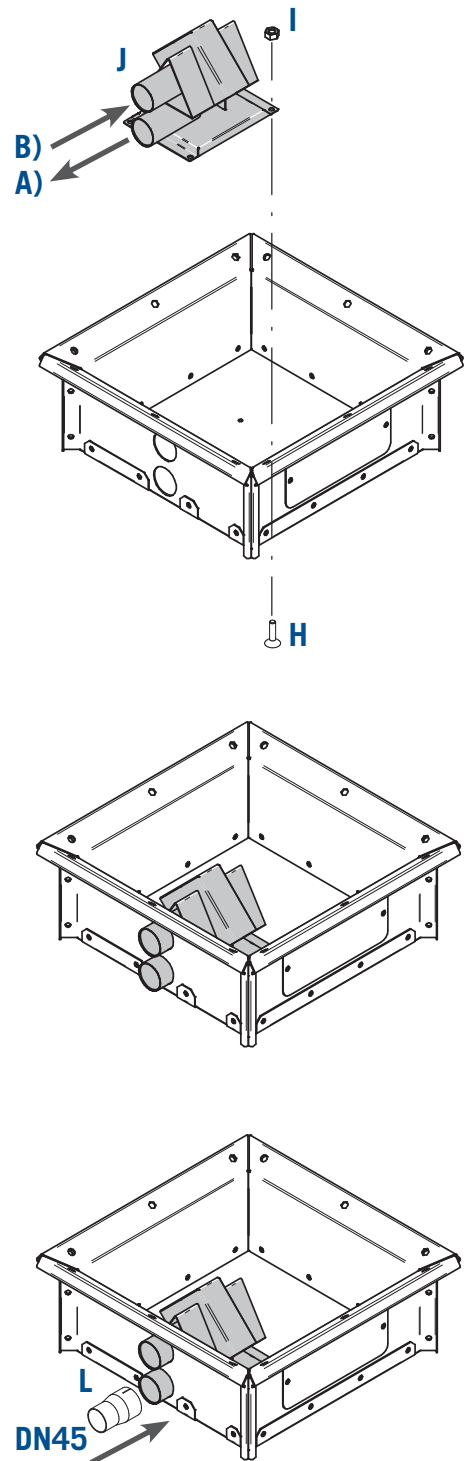
Symbol	Art.Nr.	Stk./pcs.
	(A) 2-100.99.205	2
	(B) 2-100.99.231	1
	(C) 2-100.99.211	1
	(D) 2-100.99.202	1
	(E) 2-100.99.212	1
	(F) M8x20	26
	(G) M8	24
	(H) M6x20 4-900.10.134	2
	(I) M6	2
	(J) 1-100.15.660	1
	(K) 1-100.15.619	2
	(L) 2-100.60.900	1

Technische Änderungen und Druckfehler vorbehalten. Alle Angaben ohne Gewähr. / Specifications subject to change without notice. / Con riserva di cambiamenti tecnici.



A)

DE: Anschluss Pelletansaugschlauch.
EN: Connection pellets suction hose.
FR: Branchement tuyau d'aspiration de pellets.
IT: Collegamento tubo d'aspirazione del pellet.
ES: Conexión manguera de aspiración de pellets.



B)

DE: Anschluss Rückluftschlauch.
EN: Connection air return hose.
FR: Branchement tuyau de retour d'air.
IT: Collegamento tubo di ritorno aria.
ES: Conexión manguera de retorno del aire.

